



## REGAIN CONTROL OF YOUR COUNCIL'S IMAGE LIBRARIES

Upload images with ease into a SharePoint document library or photo gallery with integration into TRIM



Photo Importer helps regain control of your Council's photographs and image libraries by using Microsoft's SharePoint, SQL Server and Active Directory technologies. Photo Importer addresses the growing issue of image management for Local Government. Photo Importer at a glance:

- > Centralises image storage by profiling with relevant data at the time of import.
- > Reduces operational costs associated with duplications and unstructured image storage.
- > Simplifies access and manages control of images with information at your fingertips.
- > Enables compliance with records management regulations.
- > TRIM Integration providing further functionality and compliance to your existing systems.

Photo Importer for Microsoft's SharePoint has just matured again with the release of version 1.9. Some of the latest features and improvements deliver :

**Greater Functionality,  
Greater Flexibility and  
Improved TRIM Integration**

# MANAGE IMAGES EASILY WITH PHOTO IMPORTER



Photo Importer is a utility to assist in the efficient bulk management of photo repositories and uploading these images to a SharePoint document library or photo gallery. By using Photo Importer you can centrally store your image collection, supply additional image information and know that images follow a structured naming convention.

Photo Importer can now insert records directly into the TRIM Context software. This ensures that not only are the images stored in SharePoint for easy viewing, but proper record management is maintained within TRIM.

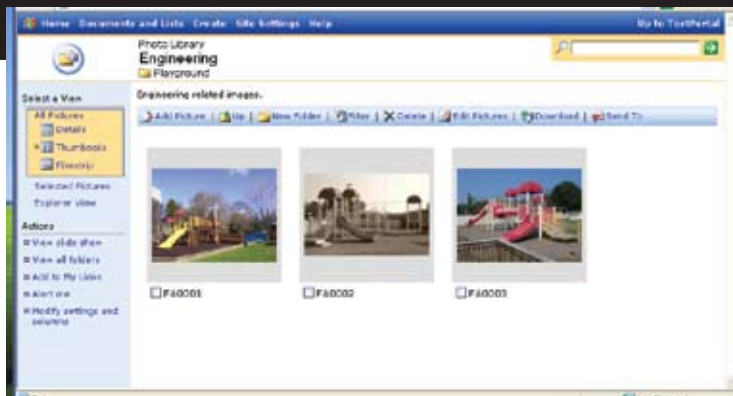
The user is guided through a series of straightforward steps, with simple prompts for the entry of key data, to enable the management of both images and their associated information for display within SharePoint and TRIM.

Great care has been given to make the process of batch data entry simple, while still providing the user with the power and flexibility to change individual image key data settings.

Photo Importer is continually changing with new and advanced features. Photo Importer Version 1.8 is the latest release and adds to its already simplistic nature, making your job even easier. In addition, Photo Importer is compatible with Windows Vista and Windows 7.

To celebrate the release of v1.9 CSA is offering a **FREE 12 MONTH MAINTENANCE CONTRACT** after your first year valued at over \$500 for any purchase of Photo Importer 1.9.

**SPECIAL FREE OFFER** Available only from this Conference



COMPUTER SYSTEMS AUSTRALIA  
SYDNEY p 02 9017 3200  
NEWCASTLE p 02 4915 1100  
WWW.CSAIT.COM.AU